



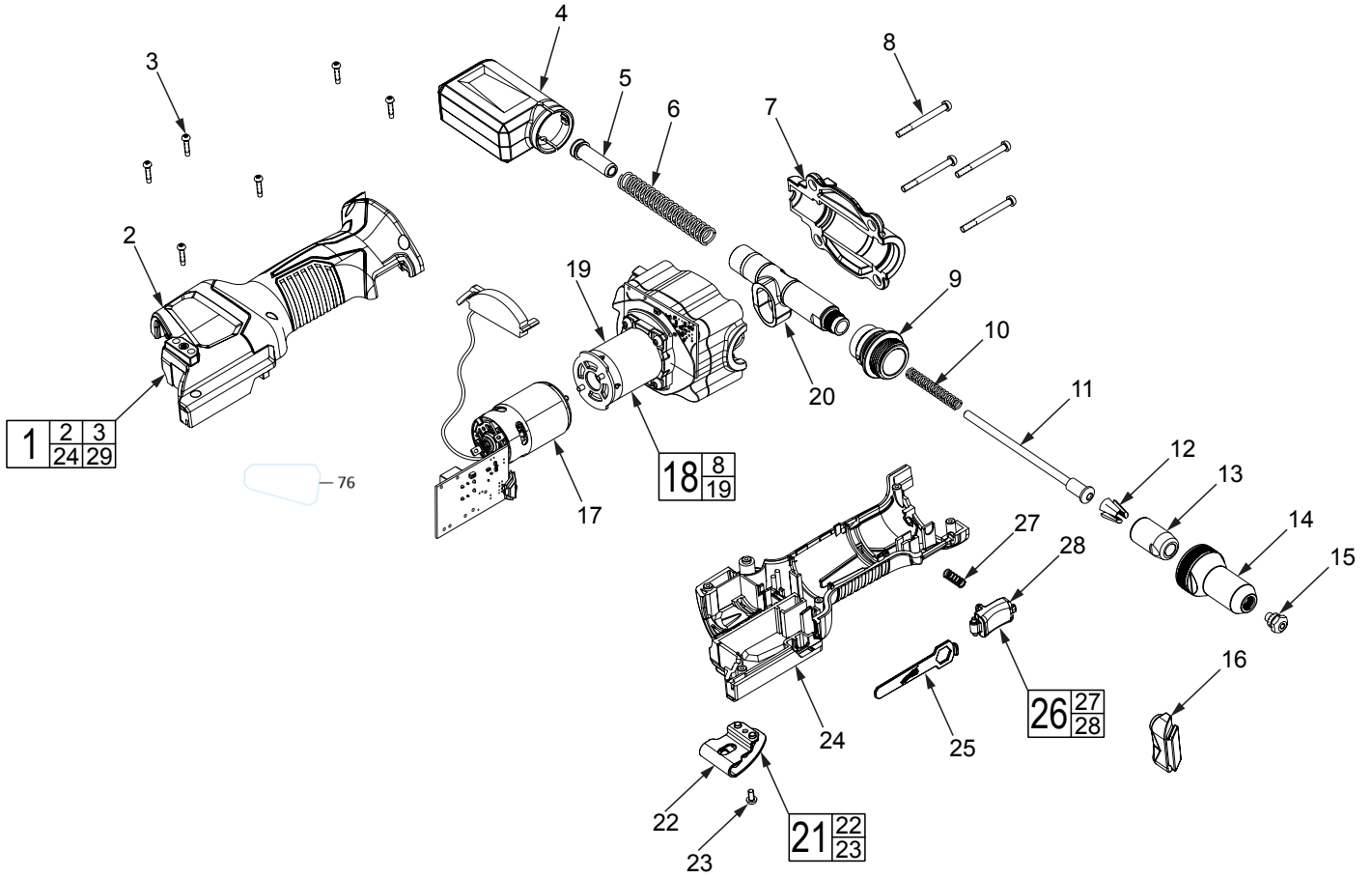
SERVICE PARTS LIST

SERVICE PARTS

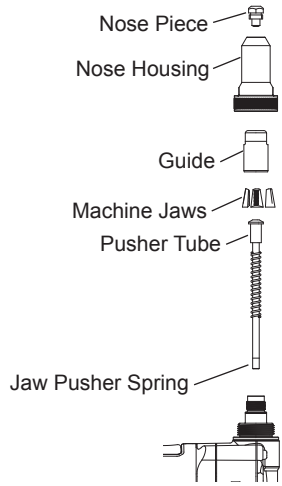
SPECIFY CATALOG NO. AND SERIAL NO. WHEN ORDERING PARTS		REVISED BULLETIN	DATE
M12™ RIVET TOOL			Nov. 2017
MODEL NO. M12BPRT-0	2550-20	WIRING INSTRUCTION	

EXAMPLE:
 00 0 Component Parts (Small #) Are Included
 When Ordering The Assembly (Large #).

SERVICE TABLE OF CONTENTS	
Page 1	Service Parts
Page 2	Lubrication Instructions



LUBRICATION INSTRUCTIONS



Clean and lubricate the nose of the tool after heavy use (5000 rivets) or if tool becomes contaminated with dust and debris.

1. Remove battery pack.
2. Remove the nose housing from the tool and the nose piece from the housing.
3. Remove the guide (with jaws), pusher tube, and spring from the tool.
4. Clean all pieces with a dry cloth and inspect for damage. If damaged, return to a MILWAUKEE service facility for repairs.
5. Apply a small amount of 51084290 grease to the pieces and reassemble, as shown. Ensure the jaws are properly seated in the guide.

FIG.	PART NO.	DESCRIPTION OF PART	NO. REQ.
32	51084290	T-Grease (14 oz.) (Not Shown)	(1)